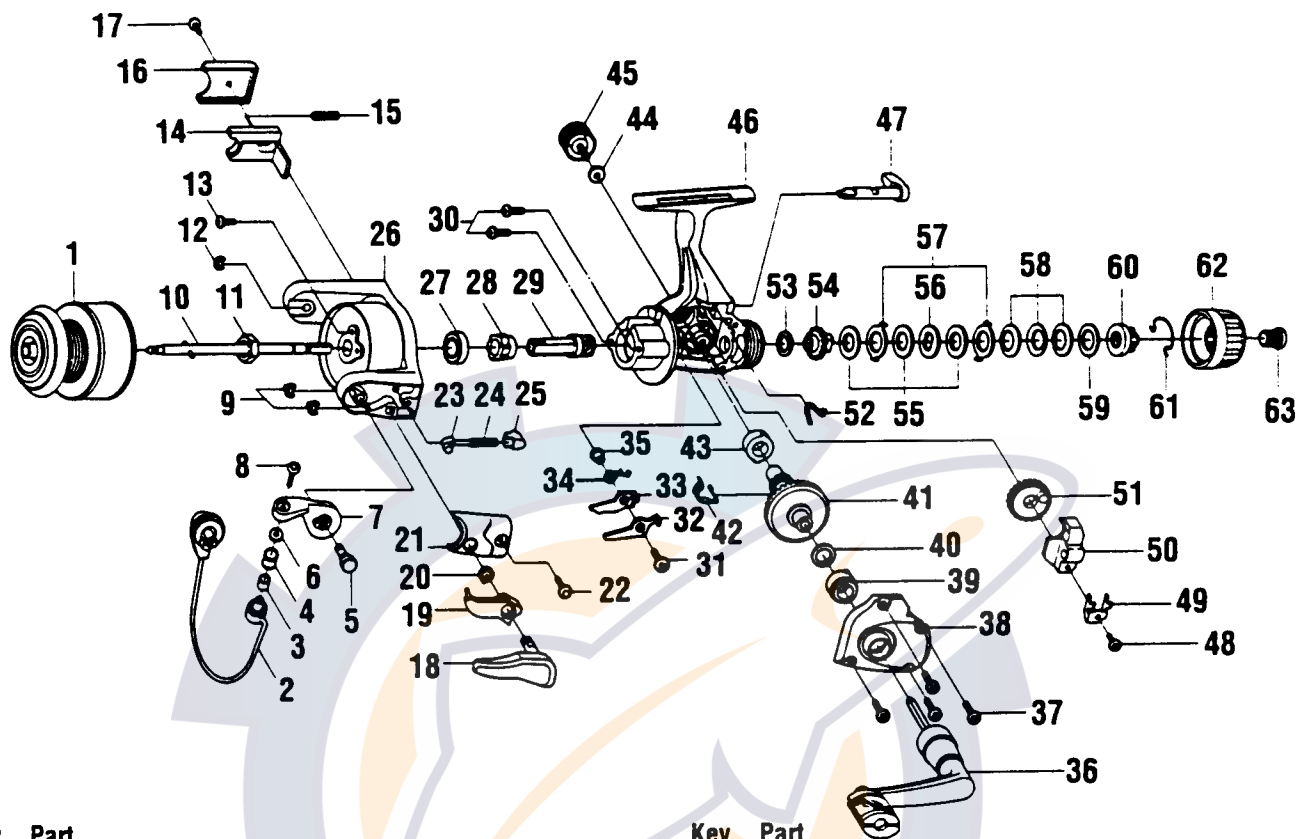


QUANTUM SR2



Key No.	Part No.	Description	Price	Key No.	Part No.	Description	Price
1	JU321-013A	Spool Assembly	10.45	33	GU074-01A	Anti-Reverse Pawl "B" (On)	.88
2	GU347-05B	Bail Assembly	4.07	34	GU061-01B	Anti-Reverse Pawl Spring	.93
3	MT016-02A	Line Roller Bushing	.77	35	GU091-01A	Anti-Reverse Pawl Post	.67
4	MT004-01B	Line Roller	.196	36	GU318-20	Handle Assembly	4.84
5	GU051-03B	Arm Lever Pin	1.03	37	GU057-01A	Body Cover Screw	.62
6	GU105-07A	Line Roller Washer	.31	38	HU023-07A	Body Cover	3.19
7	JU007-01B	Arm Lever	1.70	39	GU027-01B	Body Cover Bushing	1.60
8	KQ108-01A	Line Slider Screw	.31	40	GU105-08:11A	Adjustment Washer	.31
9	KQ034-01A	E-Clip	1.08	41	GU012-01A	Drive Gear	3.14
10	JU315-02A	Main Shaft Assembly	2.01	42	GU086-01B	Silent Cam	1.03
11	GU006-01B	Rotor Nut	.82	43	GU027-01B	Gear Shaft Bushing	1.60
12	KQ034-0A	E-Clip	1.08	44	GU105-01A	Handle Screw Washer	.41
13	GU077-04A	Rotor Nut Lock Screw	.15	45	GU073-01B	Handle Screw	1.13
14	HU019-01B	Kick Lever	.46	46	HU001-007	Body	4.02
15	KQ049-04D	Kick Lever Spring	.77	47	GU090-01A	Anti-Reverse Lever	2.37
16	HU046-01B	Kick Lever Cover	.72	48	JU100-01C	Oscillator Retainer Screw	.26
17	GU077-02B	Kick Lever Cover Screw	.62	49	HU078-01A	Oscillator Slide Retainer	.67
18	GU115-02B	Trigger Assembly	3.61	50	HU025-01A	Oscillator Slider	1.03
19	GU097-02A	Trigger Link Assembly	1.70	51	HU053-01A	Oscillator Gear	1.65
20	NL096-01A	Trigger Spring	.82	52	GU089-01B	Anti-Reverse Lever Spring	.93
21	HU087-01A	Arm Lever Spring Cover	.72	53	GU105-22A	Drag Friction Washer "A"	.67
22	GU077-02B	Arm Lever Cover Screw	.62	54	HU075-01A	Drag Click Gear	1.18
23	NL031-01A	Arm Lever Spring Pin	.72	55	GU105-23A	Drag Washer "B"	.67
24	KQ049-03D	Arm Lever Spring	1.13	56	HU080-01A	Drag Washer "D"	.98
25	QL020-01A	Arm Lever Spring Holder	.82	57	HU081-01A	Drag Washer Keyed	.98
26	HU009-07	Rotor	3.45	58	HU043-01B	Drag Spring	1.24
27	AQ028-01A	Ball Bearing	6.28	59	GU105-24A	Drag Washer	.10
28	PL060-01A	Anti-Reverse Ratchet	1.91	60	HU066-01B	Drag Nut	1.18
29	GU011-02C	Pinion	3.14	61	HU070-01A	Drag Retainer Clip	1.75
30	GU077-01A	Bearing Screw	.62	62	HU032-01A	Drag Knob	1.44
31	GU077-05A	Anti-Reverse Pawl Screw	.62	63	HU101-01B	Drag Knob Screw	1.18
32	GU063-01A	Anti-Reverse Pawl "A" (Cntr)	.88				

Prices subject to change without notice. Prices do not include postage and handling.

PLEASE ORDER BY PART NUMBER

Rev. 6/95

Zebco Division Brunswick Corporation, Box 270, Tulsa, OK 74101 USA 918-836-5581

